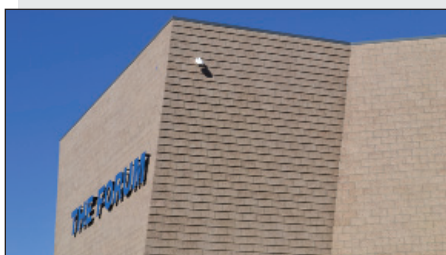
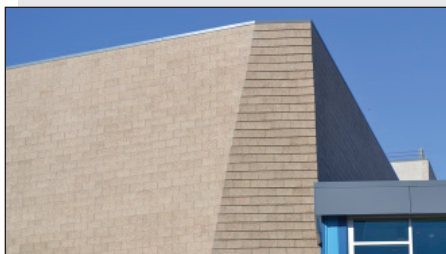


Architect
NAC Architecture
Associate Architect
FSY Architects
Masonry Contractor
Winegardner Masonry, Inc.

THE FORUM

A photograph of a modern building with a large, light-colored stone wall. The words "THE FORUM" are mounted on the wall in large, blue, three-dimensional letters. To the left, there is a smaller section of the building with blue vertical siding and a white double door. The building is set against a clear blue sky. In the foreground, there is a concrete sidewalk and a red curb.



THE FORUM – SAUGUS HIGH SCHOOL AUDITORIUM SANTA CLARITA, CALIFORNIA

Owner

*William S. Hart Union High School District
Santa Clarita CA*

Architect

*NAC Architecture
Los Angeles, CA*

Associate Architect

*FSY Architects
Los Angeles, CA*

Structural Engineering Firm

*KPFF Consulting Engineers
Los Angeles, CA*

Construction Manager

*TELACU Construction & Construction Manager
Orange, CA
(TELACU Corporate Headquarters)
Los Angeles, CA*

Masonry Contractor

*Winegardner Masonry, Inc.
Yucaipa, CA*

Masonry Producer/Supplier

Orco Block & Hardscape

Number of Stories 2

The auditorium occupies a prominent site on the Saugus High School campus and therefore serves as the primary view as one approaches the school. Concrete masonry units (CMU) were instrumental in executing the design concept.

As a signature structure of the campus, the design of this building relies on simple and elegant tilted masonry forms which create dramatic shadows as the sun hits the CMU facades.

These solid forms anchor the building and contrast with an elegant, but modest, transparent glass lobby and the blue-light blocks, which provides a combination of colors that welcomes the students and the community.

CMU's will ensure this facility withstand the test of time, providing a solid structure, as well as a dynamic and aesthetically pleasing exterior finish.

Construction by a signatory masonry contractor using members of Bricklayers & Allied Craftsmen Union Locals



MASONRY INSTITUTE OF AMERICA

Post Office Box 3905
Torrance, CA 90510-3905
Toll free: (800) 221-4000
www.masonryinstitute.org

