

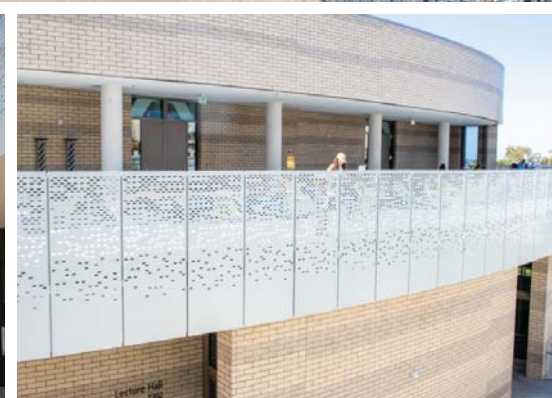
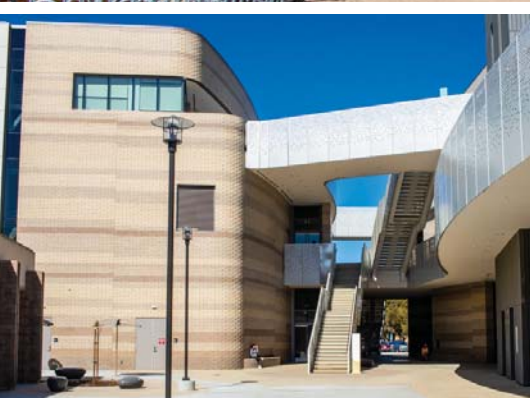
Architect

LMN Architects

Masonry Contractor

Reyes Masonry Contractors, Inc.

Interactive Learning Pavilion



UCSB – INTERACTIVE LEARNING PAVILION SANTA BARBARA, CALIFORNIA

The Interactive Learning Pavilion is located at the heart of the UCSB Campus and is organized into three buildings with an open-air central circulation area between them to allow for foot traffic. The form and materials of the building are inspired by the nearby context featuring views of the University Campus.

Tan combination of polished concrete masonry veneer units were used to create horizontal bonds and random accent courses of color and complemented the architectural character of the campus, while providing a durable and sustainable environment for higher education.

The sharp radius/corner contour of the building was unique and especially challenging yet very aesthetically pleasing. Installation of seismic wall ties and anchors to the substrate for waterproofing purposes had to be in sync for the proper sealing of the building weather barrier system.

UCSB Interactive Learning Pavilion is targeting LEED® Gold certification due to its resource-efficient design and sustainable materials.

Owner

*Regents of the University of California
Santa Barbara, CA*

Architect

*LMN Architects
Seattle, WA*

Structural Engineering Firm

*Saiful Bouquet Structural Engineers
Los Angeles, CA*

General Contractor

*C.W. Driver LLC
Pasadena, CA*

Masonry Contractor

*Reyes Masonry Contractors, Inc.
Santa Paula, CA*

Masonry Producer/Supplier

*Hohman & Bernard, Spec Mix Mortar, Best Block,
Concrete Designs Inc.*

Square Feet of Masonry

38,000 Sq Ft

Cost of Masonry

\$2,841,000

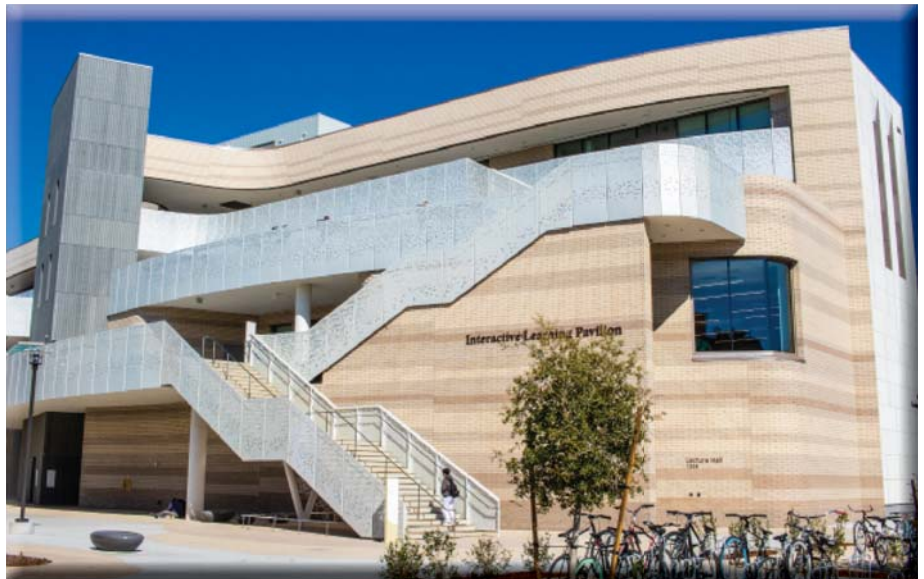
Number of Stories

4

Construction by a signatory masonry
contractor using members of
Bricklayers & Allied Craftsman Union Locals



**MASONRY
INSTITUTE OF
AMERICA**



Photos: Trevor Sena, Reyes Masonry Contractors, Inc.

Post Office Box 3905, Torrance, CA 90510-3905
Toll free: (800) 221-4000
www.masonryinstitute.org

