

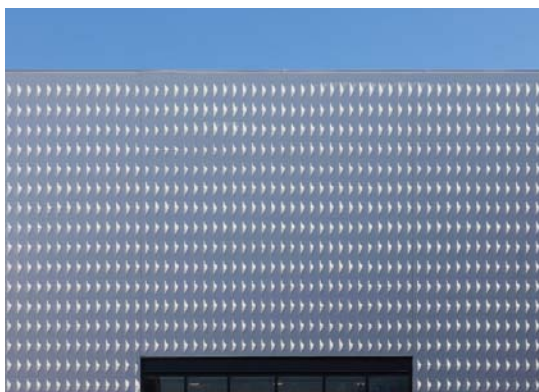
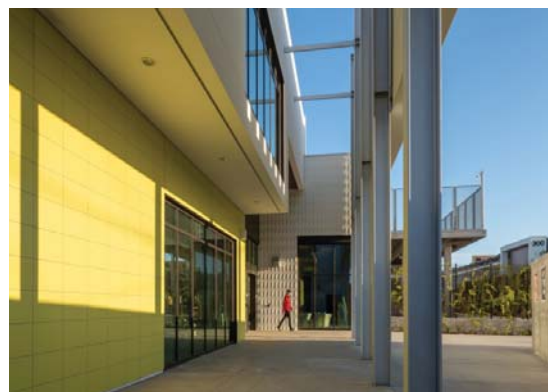
Architect

Roesling Nakamura Terada Architects, Inc.

Masonry Contractor

Winegardner Masonry, Inc.

PERFORMING ARTS CENTER
AT WOODROW WILSON MIDDLE SCHOOL
GEORGE WALKER SMITH EDUCATION CAMPUS



PERFORMING ARTS CENTER AT WILSON MIDDLE SCHOOL, GEORGE WALKER SMITH EDUCATION CAMPUS SAN DIEGO, CALIFORNIA

Wilson Middle School's new Performing Arts Center is located along a busy commercial district and is an excellent example of the inventive architectural expression and design creativity offered by masonry.

Breaking from the tradition of a standard masonry unit, the attractive design surface quality of the diamond 12" concrete masonry unit (CMU) was structurally challenging and very distinctive, providing a captivating visual impact in the surrounding neighborhood. The CMU created striking patterns of shadows and light providing an artistic personality to the Performing Arts Center.

Shadows, block orientation and texture absorb and reflects light differently, thereby giving each wall and space a visual richness that evolves throughout the day. Achievement of aesthetic excellence shows that the building efficiency can harmonize with design creativity.

The density of the masonry provides outstanding acoustical value, character and identity to the facility which is a magnetic focal point for performing arts students throughout the entire school district.

Owner

San Diego Unified School District
San Diego, CA

Architect

Roesling Nakamura Terada Architects, Inc.
San Diego, CA

Principal-in-Charge

Ralph Roesling, FAIA,

Structural Engineering Firm

KPFF Consulting Engineers
San Diego, CA

General Contractor

McCarthy Building Companies, Inc.
San Diego, CA

Masonry Contractor

Winegardner Masonry, Inc.
Yucaipa, CA

Masonry Producer/Supplier

RCP Block & Brick, Inc.
Lemon Grove, CA

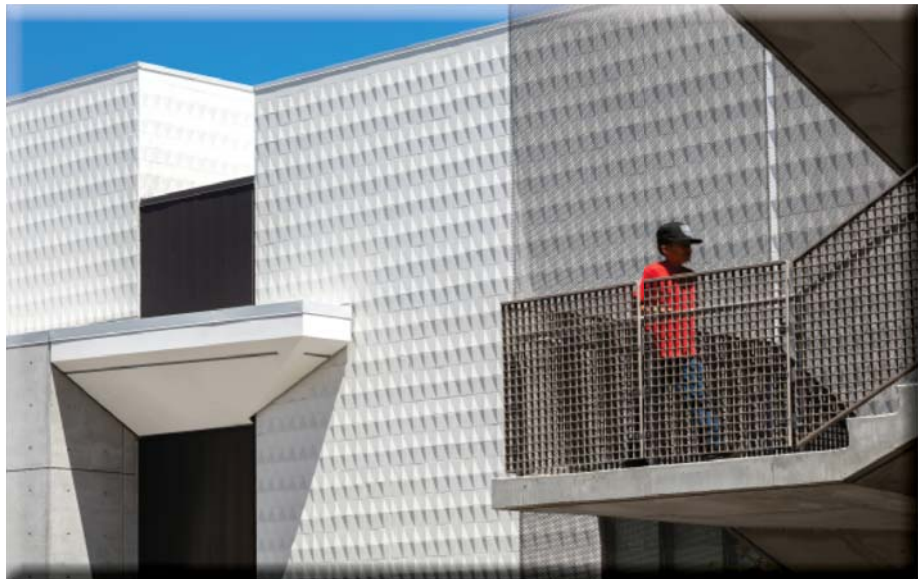
Number of Stories

3

Construction by a signatory masonry contractor using members of Bricklayers & Allied Craftsmen Union Locals



**MASONRY
INSTITUTE OF
AMERICA**



Photos: Jeff Durkin @ Bread Truck Films

Post Office Box 3905, Torrance, CA 90510-3905
Toll free: (800) 221-4000
www.masonryinstitute.org

